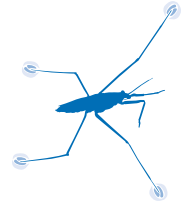


# Expanded Topic Index



The following is an alphabetical listing of topics included in Aquatic WILD activities. This is not a comprehensive listing; that is, it does not list every possible topic. It does, however, list topics that might be included in an elementary or secondary course of study in a variety of subject areas.

Activities are listed alphabetically, not according to the degree to which they emphasize the topic. We hope this serves to assist in your curriculum planning as you integrate Aquatic WILD activities into existing courses of study and other instructional programs.

## Acid Precipitation or Rain

What's in the Air? (201)

## Adaptation

Eat and Glow (112); Fashion a Fish (98); Hooks and Ladders (84); Marsh Munchers (75); Mermaids and Manatees (124); Micro Odyssey (91); Puddle Wonders! (166); Sockeye Scents (103)

## Amphibians

Are You Me? (2); Blue Ribbon Niche (94); Puddle Wonders! (166)

## Aquaculture

Designing a Habitat (34); Water We Eating? (128)

## Awareness

A Whale of an Issue (141); Aqua Words (69); Aquatic Times (264); Are You Me? (2); Conservation Messaging (289); Edge of Home (119); Fishy Who's Who (9); How Wet Is Our Planet? (180); Kelp Help (279); Marsh Munchers (75); Puddle Wonders! (166); Riparian Retreat (175); Something's Fishy Here! (212); Water Canaries (63); Water Plant Art (72); Water We Eating? (128); Water Wings (160); Wetland Metaphors (80); Whale of a Tail (12); Where Does Water Run? (44); Working for Wildlife (296)

## Birds

Are You Me? (2); Blue Ribbon Niche (94); Migration Headache (18); Plastic Voyages (189); Riparian Retreat (175); To Dam or Not To Dam (260)

## Carrying capacity

Fishable Waters (232); Got Water? (24); Hooks and Ladders (84); Migration Headache (18); Turtle Hurdles (246); Water Safari (37); Where Have All the Salmon gone (254)

## Careers

Working for Wildlife (296)

For more on careers, see "WILD Work" in the sidebar of every Aquatic WILD activity.

## Communications

Aquatic Times (264); Conservation Messaging (289); Facts and Falsehoods (184); Living Research: Aquatic Heroes and Heroines (293); Mermaids and Manatees (124); Working for Wildlife (296)

## Community (cultural)

A Whale of an Issue (141); Alice in Waterland (223); Dragonfly Pond (282); Facts and Falsehoods (184); How Wet Is Our Planet? (180); Living Research: Aquatic Heroes and Heroines (293); Plastic Voyages (189); Something's Fishy Here! (212); To Dam or Not To Dam (260); Water We Eating? (128); Watered-Down History (138); What's in the Water? (206); Where Does Water Run? (44)

## Community (ecological)

Blue Ribbon Niche (94); Dragonfly Pond (282); Fishable Waters (232); Fishy Who's Who (9); How Wet Is Our Planet? (180); Kelp Help (279); Marsh Munchers (75); Micro Odyssey (91); Migration Headache (18); Puddle Wonders! (166); Riparian Retreat (175); The Glass Menagerie (228); Water Canaries (63); Water Wings (160); Watered-Down History (138); Watershed (196); Wetland Metaphors (80); What's in the Water? (206); Where Does Water Run? (44)

## Conservation

A Whale of an Issue (141); Alice in Waterland (223); Conservation Messaging (289); Dragonfly Pond (282); How Wet Is Our Planet? (180); Living Research: Aquatic Heroes and Heroines (293); Migration Headache (18); Net Gain, Net Effect (131); Plastic Voyages (189); Something's Fishy Here! (212); Turtle Hurdles (246); Water Works (216); Watershed (196); What's in the Water? (206); Working for Wildlife (296)

## Culture

A Whale of an Issue (141); Alice in Waterland (223); Dragonfly Pond (282); Facts and Falsehoods (184); How Wet Is Our Planet? (180); Kelp Help (279); Living Research: Aquatic Heroes and Heroines (293); Mermaids and Manatees (124); Net Gain, Net Effect (131); Plastic Voyages (189); Sea Turtles International (147); Something's Fishy Here! (212); To Dam or Not To Dam (260); Water We Eating? (128); Watered-Down History (138); What's in the Water? (206); Where Have All the Salmon Gone? (254)

## Dams

Blue Ribbon Niche (94); Fishable Waters (232); Hooks and Ladders (84); To Dam or Not To Dam (260); Where Have All the Salmon Gone? (254)

## Diversity

A Whale of a Tail (141); Are You Me? (2); Blue Ribbon Niche (94); Edge of Home (119); Fashion a Fish (98); Fishable Waters (232); Fishy Who's Who (9); Got Water? (24); Mermaids and Manatees (124); Micro Odyssey (91); Puddle Wonders! (166); Riparian Retreat (175); Urban Waterway Checkup (54); Water Canaries (63); Water Safari (37); Wetland Metaphors (80)

## Ecological Systems

Aquatic Roots (251); Blue Ribbon Niche (94); Conservation Messaging (289); Designing a Habitat (34); Dragonfly Pond (282); Fishable Waters (232); Fishy Who's Who (9); Kelp Help (279); Marsh Munchers (75); Migration Headache (18); Pond Succession (108); Puddle Wonders (166); Riparian Retreat (175); Water Canaries (63); Water Wings (160); Watered-Down History (138); Watershed (196); Wetland Metaphors (80); What's in the Water? (206); Where Does Water Run? (44)

## Economics

A Whale of an Issue (141); Aquatic Roots (251); Dam Design (269); Dragonfly Pond (282); Hooks and Ladders (84); Net Gain, Net Effect (131); Plastic Voyages (189); Sea Turtles International (147); Something's Fishy Here! (212); To Dam or Not To Dam (260); Turtle Hurdles (246); Water We Eating? (128); What's in the Water? (206); Where Have All the Salmon Gone? (254)

## Ecosystem

Blue Ribbon Niche (94); Conservation Messaging (289); Dragonfly Pond (282); Edge of Home (119); Fishy Who's Who (9); Marsh Munchers (75); Puddle Wonders! (166); Riparian Retreat (175); The Glass Menagerie (228); Water Canaries (63); Water Wings (160); Watered-Down History (138); Watershed (196); Wetland Metaphors (80)

## Edge Effect

Edge of Home (119)

## Endangered Species

A Whale of an Issue (141); Aquatic Roots (251); Blue Ribbon Niche (94); Dragonfly Pond (282); Hooks and Ladders (84); Mermaids and Manatees (124); Migration Headache (18); Net Gain, Net Effect (131); Plastic Voyages (189); The Glass Menagerie (228); To Dam or Not To Dam (260); Turtle Hurdles (246); Whale of a Tail (12); What's in the Water? (206)

## Erosion

Conservation Messaging (289); Fishable Waters (232); Watershed (196); What's in the Water? (206); Where Does Water Run? (44)

## Estuary

Dragonfly Pond (282); Marsh Munchers (75); Wetland Metaphors (80); What's in the Water? (206)

## Eutrophication

Conservation Messaging (289); Fishable Waters (232); The Glass Menagerie (228)

## Exotic Species

Aquatic Roots (251)

## Extinction

Turtle Hurdles (246)

## Field Investigations

Edge of Home (119); Gone Fishing! (272); Got Water? (24); Puddle Wonders (166); Water Canaries (63); Water Safari (37); Watershed (196); Where Does Water Run? (44)

## Fish

Aquatic Roots (251); Are You Me? (2); Blue Ribbon Niche (94); Fashion a Fish (98); Fishable Waters (232); Fishy Who's Who (9); Gone Fishing! (272); Hooks and Ladders (84); Marsh Munchers (75); Net Gain, Net Effect (131); Plastic Voyages (189); To Dam or Not To Dam (260); Urban Waterway Checkup (54); Where Have All the Salmon Gone? (254)

## Fishing

A Whale of an Issue (141); Fishable Waters (232); Gone Fishing! (272); Hooks and Ladders (84); Net Gain, Net Effect (131); To Dam or Not To Dam (260); Turtle Hurdles (246); Where Have All the Salmon Gone? (254)

## Food Chains, Food Webs

Blue Ribbon Niche (94); Fishable Waters (232); Hooks and Ladders (84); Marsh Munchers (75); Micro Odyssey (91); Plastic Voyages (189); Turtle Hurdles (246); Water We Eating? (128); What's in the Water? (206)

## Government

A Whale of an Issue (141); Aquatic Roots (251); Dragonfly Pond (282); Fishable Waters (232); Net Gain, Net Effect (131); Plastic Voyages (189); To Dam or Not To Dam (260);

## Groundwater

Alice in Waterland (223); Dragonfly Pond (282); How Wet Is Our Planet? (180); Water Wings (160); What's in the Water? (206); Where Does Water Run? (44)

## Habitat

Alice in Waterland (223); Blue Ribbon Niche (94); Conservation Messaging (289); Designing a Habitat (34); Dragonfly Pond (282); Eat and Glow (112); Fashion a Fish (98); Fishable Waters (232); Fishy Who's Who (9); Got Water? (24); Hooks and Ladders (84); Kelp Help (279); Marsh Munchers (75); Mermaids and Manatees (124); Micro Odyssey (91); Migration Headache (18); Puddle Wonders! (166); Riparian Retreat (175); Silt:

A Dirty Word (266); Sockeye Scents (103); To Dam or Not To Dam (260); Turtle Hurdles (246); Urban Waterway Checkup (54); Water Canaries (63); Water Safari (37); Water Wings (160); Watered-Down History (138); Watershed (196); Wetland Metaphors (80); What's in the Air? (201); What's in the Water? (206); Where Does Water Run? (44); Where Have All the Salmon Gone? (254)

## Insects

Are You Me? (2); Blue Ribbon Niche (94); Riparian Retreat (175); Water Canaries (63); Water Safari (37)

## Interdependence

Aquatic Roots (251); Blue Ribbon Niche (94); Dam Design (269); Designing a Habitat (34); Dragonfly Pond (282); Edge of Home (119); Hooks and Ladders (84); How Wet Is Our Planet? (180); Kelp Help (279); Marsh Munchers (75); Micro Odyssey (91); Migration Headache (18); Puddle Wonders! (166); Riparian Retreat (175); Sea Turtles International (147); Silt: A Dirty Word (266); The Glass Menagerie (228); Water Canaries (63); Water Wings (160); Water Works (216); Watered-Down History (138); Watershed (196); Wetland Metaphors (80); What's in the Water? (206); Where Does Water Run? (44)

## Invasive Species

Aquatic Roots (251); Conservation Messaging (289)

## Issues

A Whale of an Issue (141); Aquatic Roots (251); Aquatic Times (264); Conservation Messaging (289); Dam Design (269); Dragonfly Pond (282); Facts and Falsehoods (184); Fishable Waters (232); Hooks and Ladders (84); How Wet Is Our Planet? (180); Living Research: Aquatic Heroes and Heroines (293); Migration Headache (18); Net Gain, Net Effect (131); Plastic Voyages (189); Sea Turtles International (147); Silt: A Dirty Word (266); Something's Fishy Here! (212); The Glass Menagerie (228); To Dam or Not To Dam (260); Turtle Hurdles (246); What's in the Air? (201); What's in the Water? (206); Working for Wildlife (296)

## Lake Environment

Dragonfly Pond (282); Fishable Waters (232); Fishy Who's Who (9); How Wet Is Our Planet? (180); The Glass Menagerie (228); What's in the Water? (206)

## Land Use Planning

Blue Ribbon Niche (94); Dragonfly Pond (282); Fishable Waters (232); Migration Headache (18); To Dam or Not To Dam (260); Turtle Hurdles (246); Watered-Down History (138); Working for Wildlife (296)

## Laws

A Whale of an Issue (141); Aquatic Roots (251); Dragonfly Pond (282); Fishable Waters (232); Net Gain, Net Effect (131); Sea Turtles International (147); To Dam or Not To Dam (260); Turtle Hurdles (246); Where Have All the Salmon Gone? (254); Working for Wildlife (296)

## Life Cycle

Are You Me? (2); Hooks and Ladders (84); Turtle Hurdles (246)

## Limiting Factors

A Whale of an Issue (141); Got Water? (24); Hooks and Ladders (84); Migration Headache (18); Net Gain, Net Effect (131); Plastic Voyages (189); Turtle Hurdles (246); Where Have All the Salmon Gone? (254)

## Mammals

A Whale of an Issue (141); Are You Me? (2); Blue Ribbon Niche (94); Hooks and Ladders (84); Mermaids and Manatees (124); To Dam or Not To Dam (260); Turtle Hurdles (246); Whale of a Tail (12)

## Management

A Whale of an Issue (141); Aquatic Roots (251); Conservation Messaging (289); Dam Design (269); Dragonfly Pond (282); Fishable Waters (232); Hooks and Ladders (84); Migration Headache (18); Net Gain, Net Effect (131); Sea Turtles International (147); Silt: A Dirty Word (266); To Dam or Not To Dam (260); Urban Waterway Checkup (54); Water Works (216); What's in the Water? (206); Where Does Water Run? (44); Where Have All the Salmon Gone? (254); Working for Wildlife (296)

## Mapping

Dragonfly Pond (282); Edge of Home (119); Fishy Who's Who (9); Gone Fishing! (272); Got Water? (24); Migration Headache (18); Plastic Voyage (189); Puddle Wonders (166); Sockeye Scents (103); Urban Waterway Checkup (54); Water Safari (37); Water

We Eating? (128); Watered-Down History (138); Watershed (196); Whale of a Tail (12); Where Does Water Run? (44)

## Marine Environment

A Whale of an Issue (141); Hooks and Ladders (84); Kelp Help (279); Marsh Munchers (75); Net Gain, Net Effect (131); Plastic Voyages (189); Sea Turtles International (147); Silt: A Dirty Word (266); Turtle Hurdles (246); Water Wings (160); Whale of a Tail (12)

## Marine Mammals

A Whale of an Issue (141); Are You Me? (2); Plastic Voyages (189); Mermaids and Manatees (124); Whale of a Tail (12)

## Marsh

Dragonfly Pond (282); Marsh Munchers (75); Migration Headache (18); Wetland Metaphors (80); What's in the Water? (206)

## Migration

Dam Design (269); Fishable Waters (232); Hooks and Ladders (84); Migration Headache (18); Sockeye Scents (103); Turtle Hurdles (246); Whale of a Tail (12)

## Native Species

Aquatic Roots (251); Conservation Messaging (289); Fishy Who's Who (9)

## Neighborhood

Alice in Waterland (223); How Wet Is Our Planet? (180); Living Research: Aquatic Heroes and Heroines (293); Puddle Wonders! (166); Something's Fishy Here! (212); Water Safari (37); Water We Eating? (128); Water Wings (160); Watered-Down History (138); Watershed (196); Where Does Water Run? (44)

## Nonpoint Source Pollution

Dragonfly Pond (282); Fishable Waters (232); Plastic Voyages (189); Silt: A Dirty Word (266); Something's Fishy Here (212); The Glass Menagerie (228); Water Canaries (63); Watershed (196); What's in the Air? (201); What's in the Water? (206); Where Does Water Run? (44)

## Nutrient Loading

Fishable Waters (232); The Glass Menagerie (228); What's in the Water? (206)

## Ocean

A Whale of an Issue (141); Dragonfly Pond (282); Fishy Who's Who (9); Hooks and Ladders (84); How Wet Is Our Planet? (180); Kelp Help (279); Marsh Munchers (75); Net Gain, Net Effect (131); Plastic Voyages (189); Sea Turtles International (147); Silt: A Dirty Word (266); Turtle Hurdles (246); Water Wings (160); Whale of a Tail (12); What's in the Water? (206); Where Have All the Salmon Gone? (254)

## Plant Life

Aquatic Roots (251); Dragonfly Pond (282); Fishable Waters (232); Kelp Help (279); Marsh Munchers (75); Riparian Retreat (175); Urban Waterway Checkup (54); Water Plant Art (72); Water Wings (160); Watered-Down History (138); What's in the Air? (201)

## Point Source Pollution

Fishable Waters (232); Something's Fishy Here (212); What's in the Water? (206)

## Pollution

Alice in Waterland (223); Blue Ribbon Niche (94); Conservation Messaging (289); Dragonfly Pond (282); Fishable Waters (232); Migration Headache (18); Plastic Voyages (189); Something's Fishy Here! (212); The Glass Menagerie (228); Urban Waterway Checkup (54); What's in the Air? (201); What's in the Water? (206)

## Pond Environment

Dragonfly Pond (282); Micro Odyssey (91); Migration Headache (18); Pond Succession (108); The Glass Menagerie (228); Water Canaries (63); What's in the Water? (206)

## Precipitation

Puddle Wonders! (166); What's in the Air? (201); Where Does Water Run? (44)

## Predator/Prey Relationships

Blue Ribbon Niche (94); Hooks and Ladders (84); Marsh Munchers (75); Micro Odyssey (91); Net Gain, Net Effect (131); Turtle Hurdles (246)

## Producers, Consumers, Decomposers

Blue Ribbon Niche (94); Fishable Waters (232); Marsh Munchers (75); Micro Odyssey (91); What's in the Water? (206)

## Recreation

Gone Fishing! (272); To Dam or Not To Dam (260)

## Regulations

A Whale of an Issue (141); Aquatic Roots (251); Dragonfly Pond (282); Fishable Waters (232); Net Gain, Net Effect (131); Sea Turtles International (147); To Dam or Not To Dam (260); Turtle Hurdles (246); Where Have All the Salmon Gone? (254)

## Responsible Human Actions

A Whale of an Issue (141); Alice in Waterland (223); Conservation Messaging (289); Dam Design (269); Dragonfly Pond (282); Facts and Falsehoods (184); Fishable Waters (232); Gone Fishing! (272); How Wet Is Our Planet? (180); Living Research: Aquatic Heroes and Heroines (293); Plastic Voyages (189); Sea Turtles International (147); Silt: A Dirty Word (266); Something's Fishy Here! (212); Turtle Hurdles (246); Urban Waterway Checkup (54); Watershed (196); What's in the Water? (206); Where Does Water Run? (44); Working for Wildlife (296)

## Riparian Environment

Blue Ribbon Niche (94); Dragonfly Pond (282); Fishable Waters (232); Hooks and Ladders (84); Riparian Retreat (175); Watered-Down History (138); What's in the Water? (206)

## River Environment

Blue Ribbon Niche (94); Dragonfly Pond (282); Fishable Waters (232); Fishy Who's Who (9); Hooks and Ladders (84); How Wet Is Our Planet? (180); Riparian Retreat (175); To Dam or Not To Dam (260); Watered-Down History (138); What's in the Water? (206); Where Have All the Salmon Gone? (254)

## Salmon

Hooks and Ladders (84); To Dam or Not To Dam (260); Where Have All the Salmon Gone? (254)

## Science and Society

A Whale of an Issue (141); Alice in Waterland (223); Aquatic Roots (251); Dragonfly Pond (282); Hooks and Ladders (84); How Wet Is Our Planet? (180); Kelp Help (279); Migration Headache (18); Net Gain, Net Effect (131); Plastic Voyages (189); Something's Fishy Here! (212); To Dam or Not To Dam (260);

Turtle Hurdles (246); Water We Eating? (128); Watered-Down History (138); What's in the Air? (201); What's in the Water? (206)

## Soil

Fishable Waters (232); Watershed (196); What's in the Air? (201); What's in the Water? (206); Where Does Water Run? (44)

## Stream Environment

Blue Ribbon Niche (94); Dragonfly Pond (282); Fishable Waters (232); Riparian Retreat (15); Water Canaries (63); What's in the Water? (206)

## Toxic Substances

Alice in Waterland (223); Dragonfly Pond (282); Fishable Waters (232); Plastic Voyages (189); Something's Fishy Here! (212); What's in the Air? (201); What's in the Water? (206); Where Does Water Run? (44)

## Turtles

Are You Me? (2); Net Gain, Net Effect (131); Plastic Voyages (189); Sea Turtles International (147); Turtle Hurdles (246)

## Urban

Alice in Waterland (223); Aquatic Times (264); Dam Design (269); Designing a Habitat (34); Dragonfly Pond (282); Fishable Waters (232); How Wet Is Our Planet? (180); Living Research: Aquatic Heroes and Heroines (293); Puddle Wonders! (166); Sea Turtles International (147); Silt: A Dirty Word (266); Something's Fishy Here! (212); To Dam or Not to Dam (260); Urban Waterway Checkup (54); Water Safari (37); Water We Eating? (128); Water Works (216); What's in the Water? (206); Where Does Water Run? (44)

## Values of Aquatic Species and Environments

Aqua Words (69); Aquatic Times (264); Dragonfly Pond (282); Fishy Who's Who (9); Kelp Help (279); Marsh Munchers (75); Riparian Retreat (175); Sea Turtles International (147); Turtle Hurdles (246); Water Canaries (63); Water Plant Art (72); Water Wings (160); Wetland Metaphors (80); Working for Wildlife (296)

## Water Cycle

Alice in Waterland (223); Dragonfly Pond (282); How Wet Is Our Planet? (180); Water Wings (160); What's in the Water? (206); Where Does Water Run? (44)

## Water Quality

Alice in Waterland (223); Dragonfly Pond (282); Fishable Waters (232); Got Water? (24); Something's Fishy Here! (212); The Glass Menagerie (228); Urban Waterway Checkup (54); Water Canaries (63); Wetland Metaphors (80); What's in the Air? (201); What's in the Water? (206); Where Does Water Run? (44)

## Waterfowl

Are You Me? (2); Migration Headache (18); Marsh Munchers (75); Plastic Voyage (189); Wetland Metaphors (80)

## Watersheds

Alice in Waterland (223); Dragonfly Pond (282); How Wet Is Our Planet? (180); Watershed (196); What's in the Water? (206); Where Does Water Run? (44)

## Wetlands

Dragonfly Pond (282); Marsh Munchers (75); Migration Headache (18); Wetland Metaphors (80); What's in the Water? (206)

## Whales

A Whale of an Issue (141); Plastic Voyages (189); Whale of a Tail (12)

## Wildlife

A Whale of an Issue (141); Are You Me? (2); Blue Ribbon Niche (94); Fishable Waters (232); Fishy Who's Who (9); Got Water? (24); Hooks and Ladders (84); Marsh Munchers (75); Mermaids and Manatees (124); Micro Odyssey (91); Migration Headache (18); Net Gain, Net Effect (131); Puddle Wonders! (166); Riparian Retreat (175); Something's Fishy Here! (212); To Dam or Not to Dam (260); Turtle Hurdles (246); Urban Waterway Checkup (54); Water Canaries (63); Water Safari (37); Water Wings (160); Watered-Down History (138); Whale of a Tail (12)

## Zoos and Aquaria

Designing a Habitat (34)